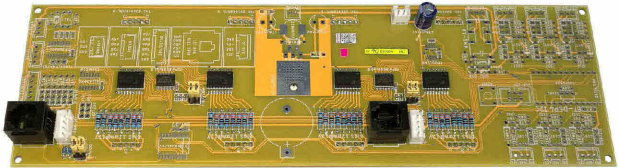
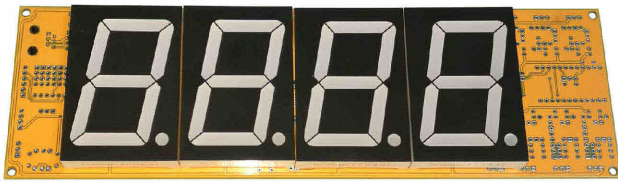


ET-DSP4 I2C SLAVE (P-ET-A-00603)



ET-DSP4 I2C SLAVE is a large DISPLAY 7SEGMENT Board that use red 4-Digit LED 7SEGMENT with 2.3 inch high. It receives Command to control the Display through PORT I2C. It is easily connected to Board Microcontrollers such as ET-MEGA32U4-RS485, ET-ESP8266-RS485, BBC MICRO:BIT and etc. It is I2C Interface, so it can connect 4 Board ET-DSP4 I2C SLAVE simultaneously.

SPECIFICATIONS OF ET-DSP4 I2C SLAVE

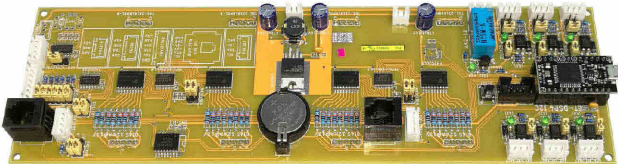
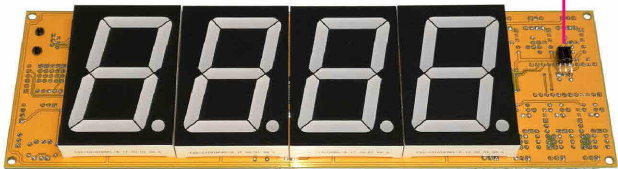
- Be red 4-Digit LED 7SEGMENT, with 2.3 inch high
- Use IC I2C No.PCF8575 to receive data and show data together with ULN2803
- Has JUMPER to setup and choose Address Positions of board; it can connect 4 Boards together
- Has 2 sets of Connector I2C BUS as 4 PIN WAFER 2.50 mm. and 2 sets of Connector I2C BUS as RJ11 6PIN FEMALE to connect in-out from board
- Use POWER +12VDC as 2 PIN WAFER 2.50 mm. for running 7SEGMENT. and +5VDC from Connector I2C BUS for running PCF8575
- Size of 4-Digit DISPLAY: 19.2 x 6.9 cm
- PCB Size: 26 x 8 cm.
- A set of **ET-DSP4 I2C SLAVE** includes ...

1. Board ET-DSP4 I2C SLAVE
2. Document

(*Please visit website: www.etteamc.com to DOWNLOAD Manual and Example Program).

ET-DSP4 I2C MASTER (P-ET-A-00604)

- Have 1-CH Circuit to receive Signal IR INFARED from IR REMOTE.



ADDITIONAL SPECIFICATIONS OF ET-DSP4 I2C SLAVE

- MCU on board is PRO-MICRO 32U4 to command
 - ATMEGA32U, FLASH 32 KBYTE, RAM 2.5 KBYTE, EEPROM 1 KBYTE
 - USB PORT as MICRO USB on board can be used with Program Arduino for writing and developing program
- Have RTC (REAL TIME CLOCK) No.DS3231, provided with BATTERY BACKUP
- Have 1 of OUTPUT RELAY 1A/24V with CONNECTOR 3 PIN WAFER 2.50 mm.
- Have 3-CH INPUT DC as OPTO-ISOLATE to choose levels of INPUT; +5V, +12V, +24V; it is provided with 3 sets of Connector 3 PIN WAFER 2.50 mm.
- Have 3-CH INPUT DC OPTO-ISOLATE as fixed +12V; it is provided with 3 sets of Connector WAFER 2.50 mm.
- Have 1-CH Circuit to receive Signal IR INFARED from IR REMOTE.
- Have 2 sets of Connector I2C BUS as 4 PIN WAFER 2.50 mm. and 2 sets of Connector I2C BUS as RJ11 6 PIN FEMALE; it connects to I2C devices or I2C Boards.
- Have 1-CH Circuit UART that can be chose either types between
 - RS232 PORT is used with Connector 4 PIN WAFER 2.50 mm.
 - RS485 PORT is used with Connector 6 PIN WAFER 2.50 mm.
- Use POWER +12VDC as 2 PIN WAFER 2.50 mm. with Circuit SWITCHING 5V/1A from +12VDC
- Size of 4-Digit DISPLAY: 19.2 x 6.9 cm.; PCB Size: 26 x 8 cm.
- A set of **ET-DSP4 I2C MASTER** includes ...

1. Board ET-DSP4 I2C MASTER
2. Document

ET-DSP4 I2C MASTER is Display Board that has a more additional part than Board ET-DSP4 I2C SLAVE, especially MCU ATMEGA32U4 that can write program and command by its own board. Moreover, it includes additional devices to support applications. It can be applied to various applications such as price tag, COUNTER to count amount of car's entrance and exit.

OPTION ET-DSP4 I2C & DSP6 I2C MASTER

CABLE USB/MICRO 1M (A-CB-A-00045)



Cable USB is 1 meter long; one terminal side is Connector TYPE A that can be connected to computer and another one side is MICRO USB TYPE B MALE that can be connected to Board PRO-MICRO 32U4.

ET-IR REMOTE KEY (P-ET-A-00546)



It is mini 20-KEY IR REMOTE with Frequency 38KHz, provided with 3V BATTERY. Its dimensions are 8.65 x 4.10 x 0.75 cm.



OPTION ET-DP4 I2C & DSP6 I2C

4P-I2C-4P (P-CB-A-00042)



- Both sides are Connector FEMALE HOUSING 4 PIN 2.50 mm.; the Cable is 20 cm. long.

RJ-I2C-RJ (P-CB-A-00041)



- Both sides are CONNECTOR RJ11; PIN 1 of one side is matching with PIN1 of another one side; the Cable is 20 cm. long.

2P-2P-30CM (P-CB-A-00051)



- Both sides are Connector FEMALE HOUSING 2 PIN 2.50 mm.; the Cable is 30 cm. long.

RJ-I2C-M (P-CB-A-00039)



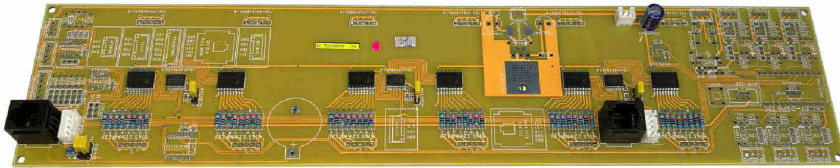
- One side is CONNECTOR RJ11 and another one side is 6-CONNECTOR PIN HEADER MALE; the Cable is 20 cm. long.

RJ-I2C-F (P-CB-A-00040)



- One side is CONNECTOR RJ11 and another one side is 6-CONNECTOR PIN HEADER FEMALE; the Cable is 20 cm. long.

ET-DSP6 I2C SLAVE (P-ET-A-00605)



ET-DSP6 I2C SLAVE is a large DISPLAY 7SEGMENT Board that use red 6-Digit LED 7SEGMENT with 2.3 inch high. It receives Command to control the Display through PORT I2C as the same as ET-DSP4 I2C SLAVE. It is easily connected to Board Microcontrollers such as ET-MEGA32U4-RS485, ET-ESP8266-RS485, BBC MICRO:BIT and etc. It is I2C Interface, so it can connect 2 Board ET-DSP6 I2C SLAVE simultaneously.

SPECIFICATIONS OF ET-DSP6 I2C SLAVE

- Be red 6-Digit LED 7SEGMENT Display, with 2.3 inch high
- Use IC I2C No. PCF8575 to receive data and show data together with ULN2803
- JUMPER setup and chooses Address Positions of Board ET-DSP6 I2C SLAVE; it can connect 2 boards together

- Have 2 sets of CONNECTOR I2C BUS as 4 PIN WAFER 2.50 mm. and 2 sets of CONNECTOR I2C BUS as RJ11 6 PIN FEMALE; it can be connected in-out from board.
- Use POWER +12VDC as 2 PIN WAFER 2.50 mm for running 7SEGMENT and +5VDC from CONNECTOR I2C BUS for running PCF8575
- Size of 6-Digit DISPLAY: 28.9 x 6.9 cm. • PCB Size: 36 x 8 cm.

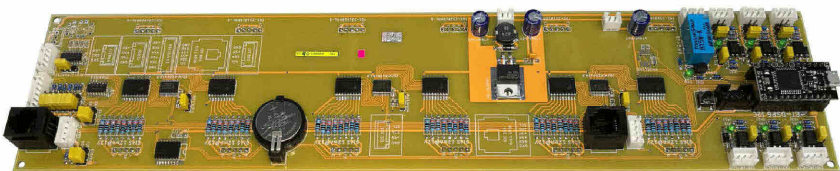
A set of **ET-DSP6 I2C SLAVE** includes...

1. Board ET-DSP4 I2C SLAVE
2. Document

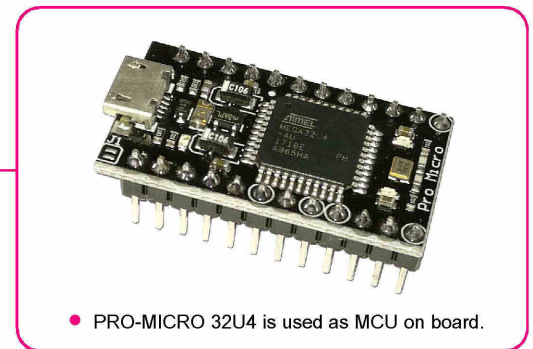
(*Please visit website: www.etteam.com to DOWNLOAD Manual and Example Program).

ET-DSP6 I2C MASTER (P-ET-A-00606)

- Have 1-CH Circuit to receive Signal IR INFARED from IR REMOTE.



ET-DSP6 I2C MASTER is Display Board that has a more additional part than Board ET-DSP6 I2C SLAVE, especially MCU ATMEGA32U4 that can write program and command by its own board. Moreover, it includes additional devices to support applications. It can be applied to various applications such as price tag, COUNTER to count amount of car's entrance and exit.



- PRO-MICRO 32U4 is used as MCU on board.

ADDITIONAL SPECIFICATIONS OF ET-DSP6 I2C SLAVE

- PRO-MICRO 32U4 is used as MCU on board
 - ATMEGA32U4, FLASH 32 KBYTE, RAM 2.5 KBYTE, EEPROM 1 KBYTE
 - USB PORT as MICRO USB on board can be used with Program Arduino for writing and developing program
- Have RTC (REAL TIME CLOCK) No.DS3231, provided with BATTERY BACKUP
- Have 1 of OUTPUT RELAY 1A/24V with CONNECTOR 3 PIN WAFER 2.50 mm.
- Have 3-CH INPUT DC as OPTO-ISOLATE to choose levels of INPUT; +5V, +12V, +24V; it is provided with 3 sets of Connector 3 PIN WAFER 2.50 mm.
- Have 3-CH INPUT DC OPTO-ISOLATE as fixed +12V; it is provided with 3 sets of Connector WAFER 2.50 mm.
- Have 1-CH Circuit to receive Signal IR INFARED from IR REMOTE.
- Have 2 sets of Connector I2C BUS as 4 PIN WAFER 2.50 mm. and 2 sets of Connector I2C BUS as RJ11 6 PIN FEMALE; it connects to I2C devices or I2C Boards.
- Have 1-CH UART that can be chose either types between
 - RS232 PORT is used with Connector 4 PIN WAFER 2.50 mm. - RS485 PORT is used with Connector 6 PIN WAFER 2.50 mm.
- Use POWER +12VDC as 2 PIN WAFER 2.50 mm. with Circuit SWITCHING 5V/1A from +12VDC
- Size of 6-Digit DISPLAY: 28.9 x 6.9 cm., PCB Size: 36 x 8 cm.

A set of **ET-DSP6 I2C MASTER** includes ...

1. Board ET-DSP6 I2C MASTER
2. Document

(*Please visit website www.etteam.com to DOWNLOAD Manual and Example Programs)



OPTION ET-DP4 I2C & DSP6 I2C

WAFER CON 2.50 mm. STRAIGHT MALE

- WAFER CON 6 PIN 2.50MM STRAIGHT (A-CO-A-00020)
- WAFER CON 5 PIN 2.50MM STRAIGHT (A-CO-A-00293)
- WAFER CON 4 PIN 2.50MM STRAIGHT (A-CO-A-00088)
- WAFER CON 3 PIN 2.50MM STRAIGHT (A-CO-A-00168)
- WAFER CON 2 PIN 2.50MM STRAIGHT (A-CO-A-00161)



HOUSING CON 2.50 mm. FEMALE

- HOUSING CON 2.50MM 2 PIN (A-CO-A-00162)
- HOUSING CON 2.50MM 3 PIN (A-CO-A-00169)
- HOUSING CON 2.50MM 4 PIN (A-CO-A-00089)
- HOUSING CON 2.50MM 5 PIN (A-CO-A-00268)
- HOUSING CON 2.50MM 6 PIN (A-CO-A-00022)
- REFILL CON CRIMP 2.50MM (A-CO-T-00002)

